

# AXCS TH-842 TELEHANDER



## STANDARD FEATURES

### DRIVE

- ▶ Deutz TCD 3.6 L4 74hp diesel engine - no DEF/DPF
- ▶ Engine block heater
- ▶ Powershift 4F, 3R transmisson
- ▶ Back-up alarm
- ▶ 4-wheel drive
- ▶ 3 steering modes: 2-wheel, 4-wheel & crab

### AXLES

- ▶ Integrated draw bar
- ▶ Dana 212 front axle with limited slip differential
- ▶ Rear axle stabilization
- ▶ +/- 10 degree frame leveling

### BRAKES

- ▶ Front & rear multi-disc oil bath brake system
- ▶ SAHR parking brake with indicator light

### TIRES

- ▶ Standard: 14 x 24 foam-filled tires

### HYDRAULIC SYSTEM

- ▶ 40 gal hydraulic capacity
- ▶ Auxiliary hydraulics with load sensing piston pump

### CAB & OTHER

- ▶ Open cab
- ▶ Multi-adjustable ergonomic suspension seat
- ▶ Premium joystick with drive and shift control functions
- ▶ In-cab multifunction display
- ▶ Carriage mounted lift hook
- ▶ Battery disconnect
- ▶ Telematics ready
- ▶ Steel fuel and hydraulic tanks
- ▶ Easy maintenance and service
- ▶ Long life boom wear pads
- ▶ Phone holder
- ▶ Integrated arm rest
- ▶ Beacon

## KEY SPECIFICATIONS

- ▶ Maximum capacity..... 8,000 lbs
- ▶ Maximum lift height..... 42 ft
- ▶ Capacity @ max lift height..... 6,000 lbs
- ▶ Maximum forward reach..... 28.7 ft
- ▶ Capacity @ max reach..... 1,200 lbs
- ▶ Weight ..... 23,920 lbs

## OPTIONS \*Build to order only

- ▶ Deutz TCD 3.6 L4 107hp diesel engine\*
- ▶ Closed cab\*
- ▶ Air conditioning (closed cab only)\*
- ▶ Road lights
- ▶ Work lights
- ▶ Boom lights
- ▶ Four wheel fenders
- ▶ Back up sensor
- ▶ Back up camera & sensor
- ▶ Load management system (LLMI)
- ▶ Cold weather package
- ▶ Arctic weather package
- ▶ Telematics
- ▶ Optional: 14 x 24 pneumatic, 14 x 24 foam-filled tires, 13 x 28 solid rubber or 13 x 28 non-marking solid rubber tires

## ATTACHMENTS

### CARRIAGES

- ▶ 48 (standard), 60, or 72 in Standard carriage
- ▶ 48, 60, or 72 in Side tilt carriage
- ▶ 72 in Swing carriage

### FORKS

- ▶ 2.36 x 4 x 48 in, 8,000 lb capacity (standard)
- ▶ 2.36 x 6 x 60 in, 9,000 lb capacity

# TH-842

## TELEHANDER

### DIMENSIONS

Maximum Lift Height	<b>42 ft</b>	12.8 m
Maximum Forward Reach	<b>28.7 ft</b>	8.76 m
<b>A</b> Stowed Length w/o Forks	<b>19.5 ft</b>	5.96 m
<b>B</b> Overall Width	<b>8.1 ft</b>	2.46 m
<b>C</b> Stowed Height	<b>8.3 ft</b>	2.54 m
<b>D</b> Wheelbase	<b>11.3 ft</b>	3.45 m
<b>E</b> Inside Tire Width	<b>6.8 ft</b>	2.08 m
<b>F</b> Ground Clearance	<b>17 in</b>	43 cm

Standard Forks **4 x 2 x 48 in** 12 x 5 x 120 cm

### SPECIFICATIONS

Max Lifting Capacity	<b>8,000 lbs</b>	3,629 kg
Max Lifting Capacity at Full Height	<b>6,000 lbs</b>	2,722 kg
Max Lifting Capacity at Max Reach	<b>1,200 lbs</b>	544 kg
Operating Weight	<b>23,920 lbs</b>	10,850 kg
Inside Turning Radius	<b>57 in</b>	1.45 m
Outside Turning Radius	<b>146 in</b>	3.7 m
Drive Speed	<b>20 mph</b>	32 kph

Frame Leveling	<b>+/- 10°</b>
Tilt Angle	<b>122°</b>
Boom Lifting Angle	<b>69°</b>

### BOOM CYCLE TIMES

Lifting	<b>9.44 s</b>
Lowering	<b>8.9 s</b>
Extension	<b>13.81 s</b>
Retraction	<b>11.77 s</b>
Crowd	<b>3.05 s</b>
Dump	<b>3.59 s</b>

### POWER

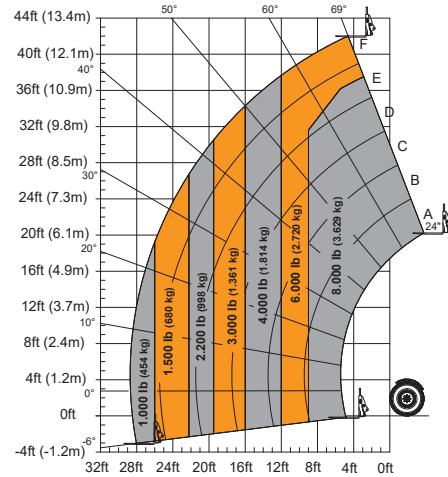
Power Source	<b>Diesel</b>
Engine Make and Model	<b>Deutz TCD 3.6 L4 - no DEF/DPF</b>
Horsepower	<b>74 hp</b>
Fuel Tank	<b>40 gal</b> 150 L
Hydraulic Tank	<b>40 gal</b> 150 L
Hydraulic Flow	<b>37 gal/min</b> 140 L/min



F



### TH-842 LOAD CHART



### AXCS "2 & 5" Warranty

Two (2) full years or 2,000 hours on the full machine and cover all specified major structural components for five (5) years.

This brochure is for illustrative purposes only and based on the latest information available at the time of printing. Custom Equipment LLC. reserves the right to make changes at any time, without notice, to specifications, standard and optional equipment.

©2025 Custom Equipment LLC. All rights reserved.

11|24 Part No. TH-00002

