

PARTS MANUAL

PA-1030

MOBILE ELEVATING WORK PLATFORM



TABLE OF CONTENTS

NOTES.....	2
FOREWORD.....	3
TABLE OF CONTENTS.....	4
INDEX OF FIGURES.....	5
SECTION 1 BASE.....	6
1.1 CASTOR PARTS.....	6
1.2 FRONT WHEEL SUBPARTS.....	7
1.3 BRAKE SUBPARTS.....	7
1.4 PUMP PARTS.....	8
1.5 PUMP SUBPARTS.....	9
1.6 MISCELLANEOUS PARTS.....	10
SECTION 2 CONTROLS.....	12
2.1 ELECTRICAL PARTS.....	12
2.2 MAIN CABLE SUBPARTS.....	14
2.3 UPPER CONTROL PARTS.....	15
2.4 LOWER CONTROL PARTS.....	16
2.5 ENABLE SWITCH SUBPARTS.....	18
2.6 E-STOP SWITCH SUBPARTS.....	18
2.7 KEY SWITCH SUBPARTS.....	19
SECTION 3 SCISSORS.....	20
3.1 SCISSOR PARTS.....	20
3.2 CYLINDER SUBPARTS.....	22
SECTION 4 PLATFORM & RAILS.....	24
SECTION 5 DECALS.....	26
SECTION 6 OPTIONS AND MISCELLANEOUS.....	28

INDEX OF FIGURES

FIGURE 1: Castor Parts.....	6
FIGURE 2: Front Wheel Subparts.....	7
FIGURE 3: Brake Subparts.....	7
FIGURE 4: Pump Parts.....	8
FIGURE 5: Pump Subparts.....	9
FIGURE 6: Miscellaneous Parts.....	10
FIGURE 7: Electrical Parts.....	12
FIGURE 8: Main Cable Subparts.....	14
FIGURE 9: Upper Control Parts.....	15
FIGURE 10: Lower Control Parts.....	16
FIGURE 11: Enable Switch Subparts.....	18
FIGURE 12: E-Stop Switch Subparts.....	18
FIGURE 13: Key Switch Subparts.....	19
FIGURE 14: Scissor Parts.....	20
FIGURE 15: Cylinder Subparts.....	22
FIGURE 16: Platform and Rails.....	24
FIGURE 17: Decals.....	26
FIGURE 18: Options and Miscellaneous.....	28

1.1 | CASTER PARTS

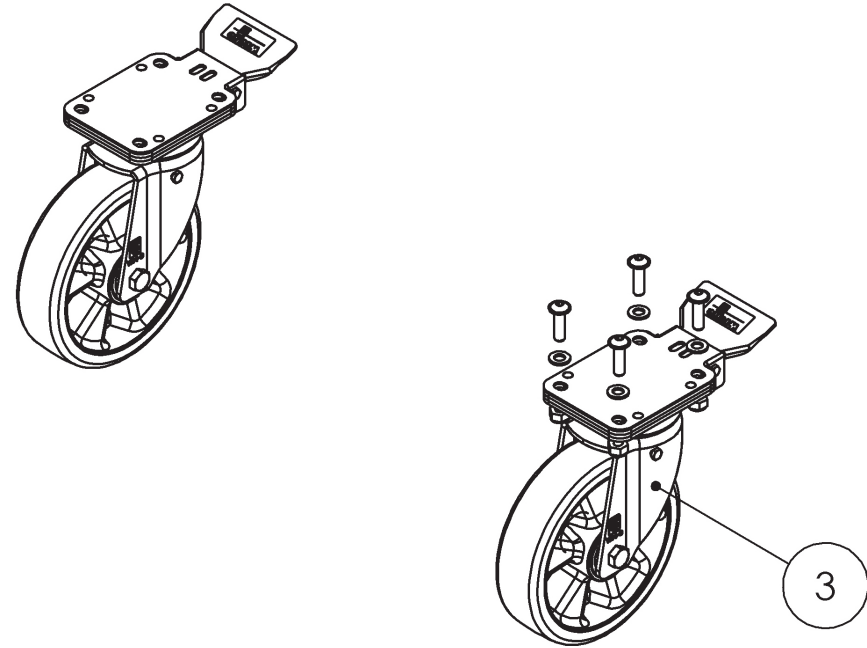


FIGURE 1: Castor Parts

Item #	Part Number	Part Description	Notes	QTY	Superseded By
1	WHEE-765	WHL,8X2,GREY UR BB		2	
2	HARD-020	0.75 RETAINING RING,EXT		2	
3	WHEE-764	WHL,8X2 GREY,W/FORK TL-FIXBRK		2	

1.2 | FRONT WHEEL SUBPARTS

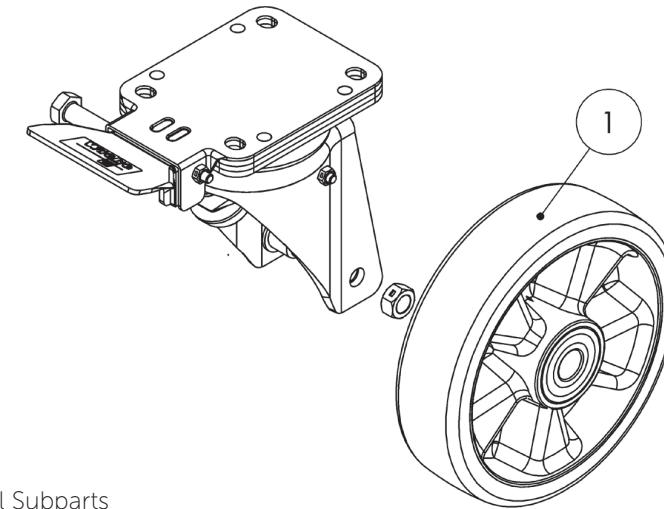


FIGURE 2: Front Wheel Subparts

Item #	Part Number	Part Description	Notes	QTY	Superseded By
1	WHEE-765	WHL,8X2,GREY UR BB		1	

1.3 | BRAKE SUBPARTS

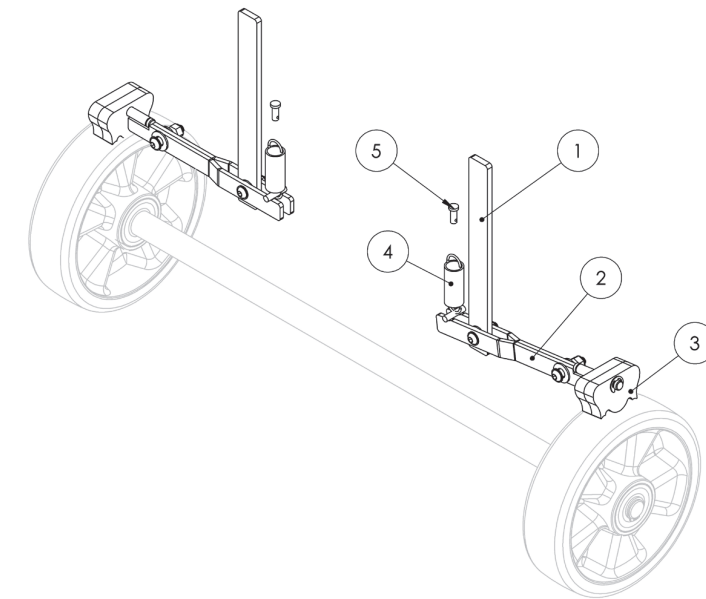


FIGURE 3: Brake Subparts

Item #	Part Number	Part Description	Notes	QTY	Superseded By
1	177-01-040-02	BASE,BRAKE ACT		2	
2	177-01-042-02	BASE,BRAKE LEVER WLDMNT		2	
3	177-01-046-02	BASE,BRAKE CAM		4	
4	HARD-690	SPRING,EXT 2.69 X .75,OD		2	
5	HARD-641-23	.25X.44U X .63L CLEVIS PIN		2	

1.4 | PUMP PARTS

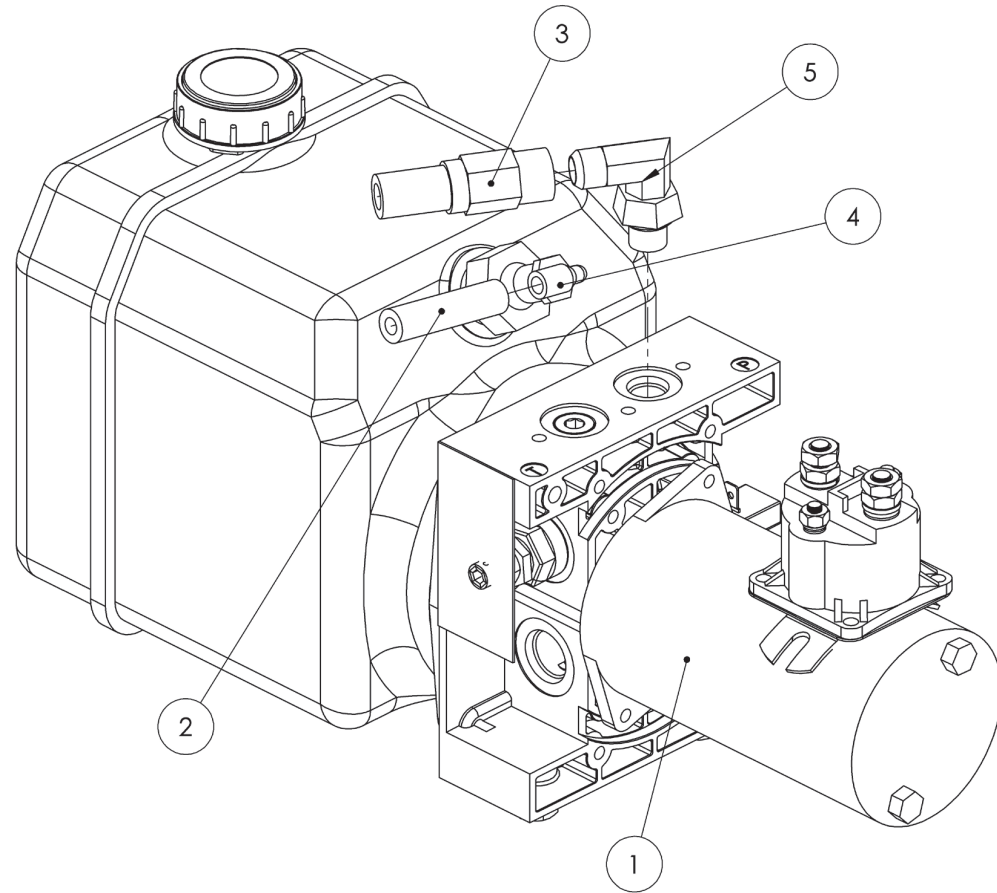


FIGURE 4: Pump Parts

Item #	Part Number	Part Description	Notes	QTY	Superseded By
1	HYDR-050-15	PUMP,12VDC,0.038		1	
2	HYDR-022-3	LOW PRESSURE HOSE	Quantity in meters	112	
3	HYDR-600-15	HOSE ASM,PRECUT IQ LIFT PRO10		1	
4	HYDR-019	FITTING,ELB,NPTM 3/8-1/4 PUSH		1	
5	HYDR-677	FITNG,ELB,JICM 9/16-SAEORM #6		1	
6	HYDR-032	HYDRAULIC OIL	Not available as a replacement part. Replace with Flomite #150, Dexron II, Mobil-DTE 2 or equivalent 32 weight implement oil.	1	

1.5 | PUMP SUBPARTS

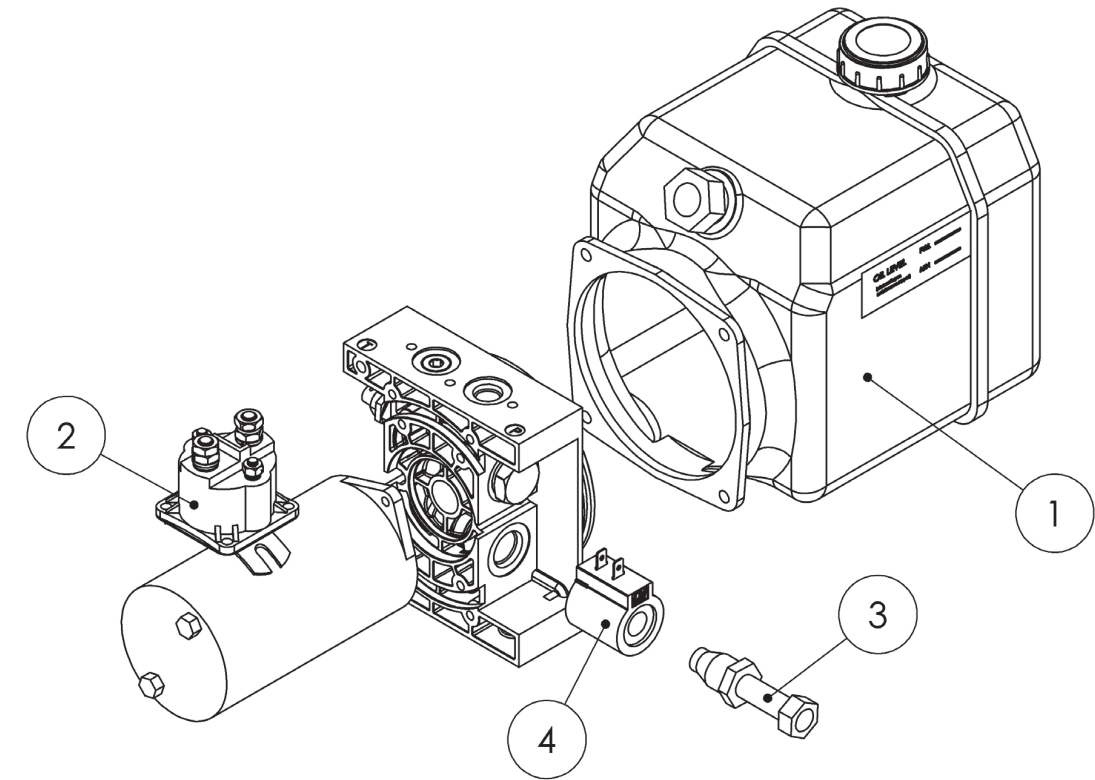


FIGURE 5: Pump Subparts

Item #	Part Number	Part Description	Notes	QTY	Superseded By
1	HYDR-116	PUMP RESERVOIR, 3 QT.		1	
2	HYDR-691	SOLENOID,12V,100 AMP		1	
3	HYDR-665	VALVE,NO,2W/2P,#8,UP		1	
4	HYDR-694	COIL,10V		1	

1.6 | MISCELLANEOUS BASE PARTS

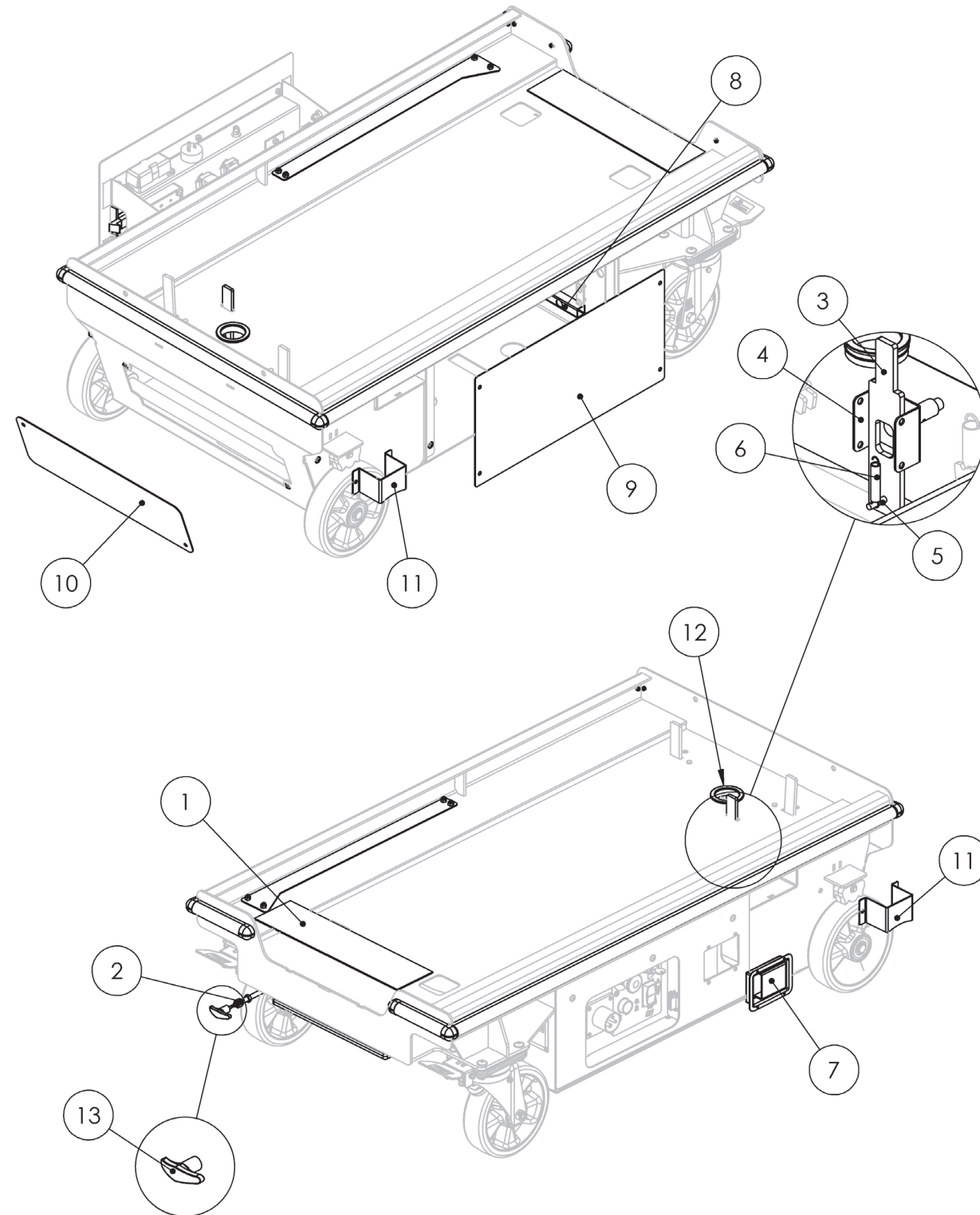


FIGURE 6: Miscellaneous Parts

Item #	Part Number	Part Description	Notes	QTY	Superseded By
1	MISC-031-06-KIT	ANTI-SLIP TAPE,4.00,16.00 LENG		1	
2	HARD-644-15	102/112 LOW FRICTION CABLE		1	
3	177-01-062-02	BASE,ARM GRD ACT		1	
4	177-01-061-02	BASE,PROX GAUGE MNT OTR		1	
5	HARD-641-25	.25X.94U X 1.13L CLEVIS PIN		1	
6	HARD-696	0.38X2.25 SPRING		1	
7	HARD-758	PADDLE,NON LOCKING,SS		1	
8	177-21-032-04	BASE,CTL SLIDE		2	
9	177-05-001-01	BASE,SIDE COVER		1	
10	177-05-002-01	BASE,COVER FRONT		1	
11	177-01-065-01	BASE,BRAKE GUARD		2	
12	HARD-759	GROMMET,LOCKING,2.50		1	
13	HARD-644-07	0.16 HANDLE,RED T		1	

2.1 | ELECTRICAL PARTS

Item #	Part Number	Part Description	Notes	QTY	Superseded By
1	ELEC-959	FUSE, 20A ATC		1	
2	ELEC-785	FUSE,250A		1	
3	ELEC-670-6	FUSE 30 AMP,PCS		2	
4	ELEC-215	SENSOR,PROXIMITY,NO/ NC,5MM		1	
5	ELEC-831	PLUG,POWER PORT		1	
6	177-21-020-55	ASM,CTL LWR PANEL PA-1030		1	
7	177-21-023-50-K	BOARD,CTL IQ LIFT		1	
8	N/A	BATTERY,12V,GR27 DEEP CYCLE	NOT SOLD FOR REPLACEMENT. REPLACE WITH GROUP 27, 12-VOLT DEEP CYCLE OR AGM BATTERY WEIGHING AT LEAST 45 LB.	1	
9	HARD-684	BATTERY STRAP,VELCRO		1	
10	ELEC-746	CHARGER,12V		1	
11	177-21-019-50	ASM,WIRE HARNESS MAIN IQ LIFT		1	
12	1002101650	CABLE,6GA,BLACK,36,B/B		2	
13	143-01-025-50	CABLE,6GA,RED,26,R/R,.38 EYES		2	
14	1002103851	CABLE,6GA,RED,40,R/R		1	
15	ELEC-634A	TERMINAL COVER (RED)		1	
16	ELEC-634B	TERMINAL COVER (BLACK)		1	
17	HARD-086	LEVEL,BUBBLE		1	
18	177-21-006-55	ASM,CTL UPR		1	
19	177-21-018-50	ASM,CTL WIRE HARNESS BEACON		1	
20	WS-177-20-001-55	ELEC SCH, PA 1030	ELECTRICAL SCHEMATIC	1	
21	WD-177-20-001-55	WD, PA 1030	WIRING DIAGRAM	1	

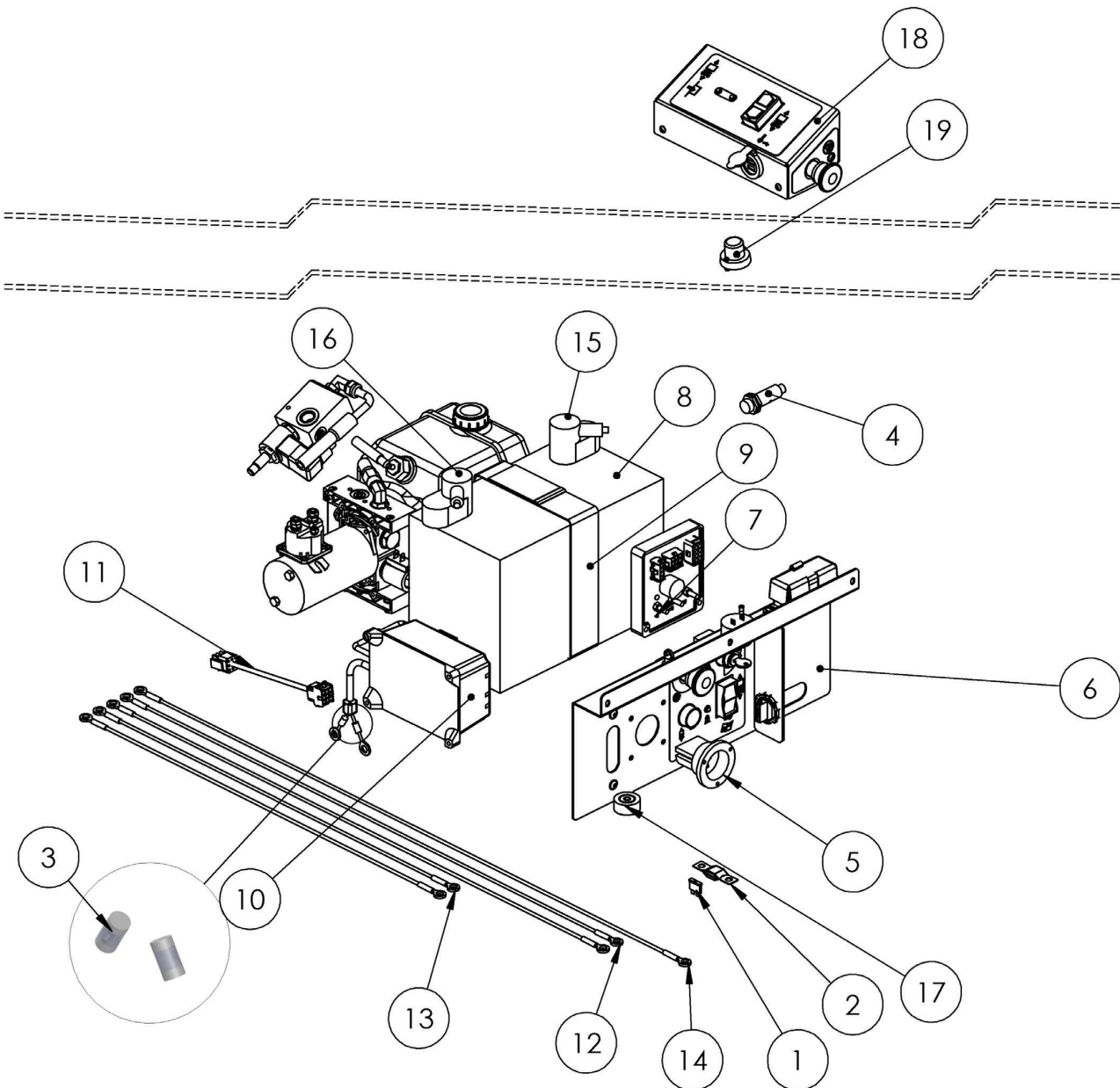


FIGURE 7: Electrical Parts

2.2 | MAIN CABLE SUBPARTS

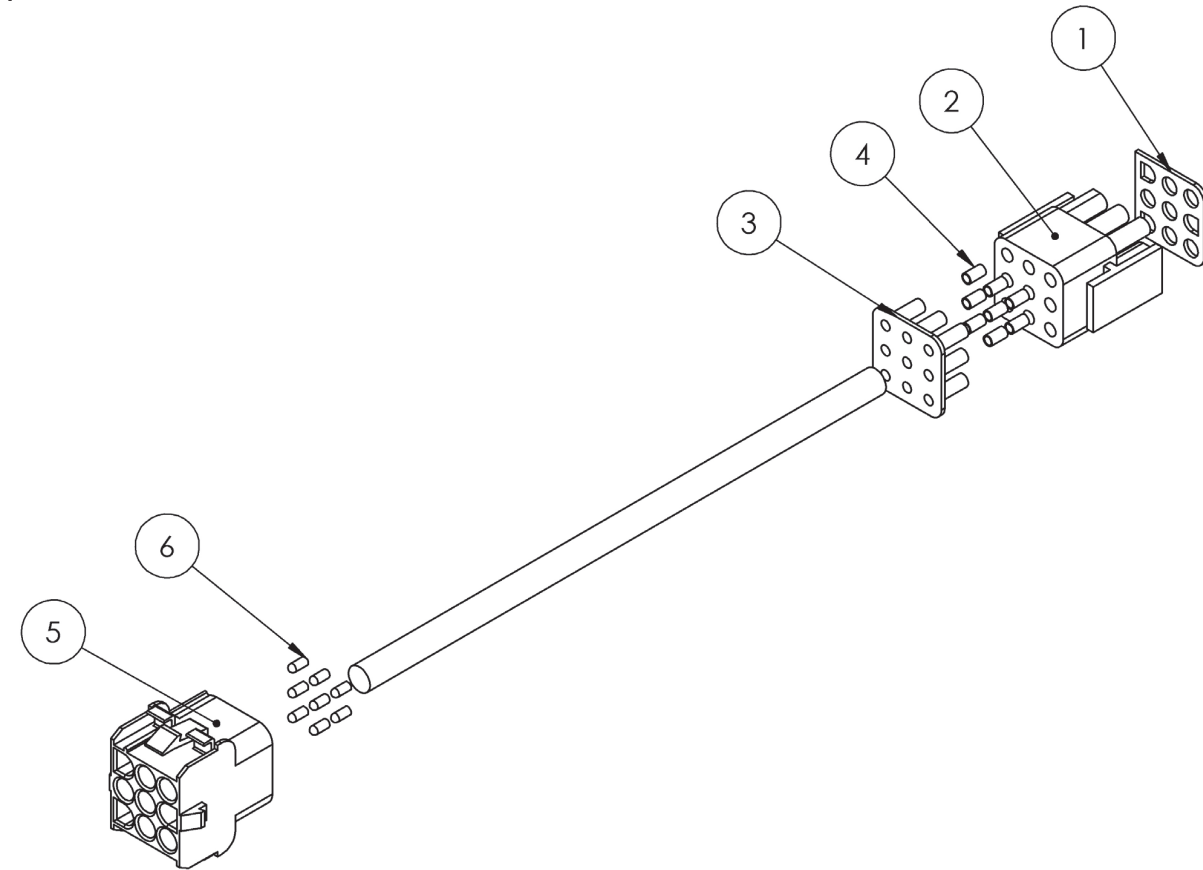


FIGURE 8: Main Cable Subparts

Item #	Part Number	Part Description	Notes	QTY	Superseded By
1	ELEC-646-1-4A	FLAT SEAL,09C		1	
2	ELEC-646-1-4B	PLUG,09C,AMP		1	
3	ELEC-646-1-4C	WIRE SEAL,09C		1	
4	ELEC-693-2	CONTACT RECEPTACLE,20-14GA AMP		8	
5	ELEC-765	SOCKET,09C AMP		1	
6	ELEC-693-1	CONTACT PIN,20-14 AWG,AMP		8	

2.3 | PLATFORM CONTROL PARTS

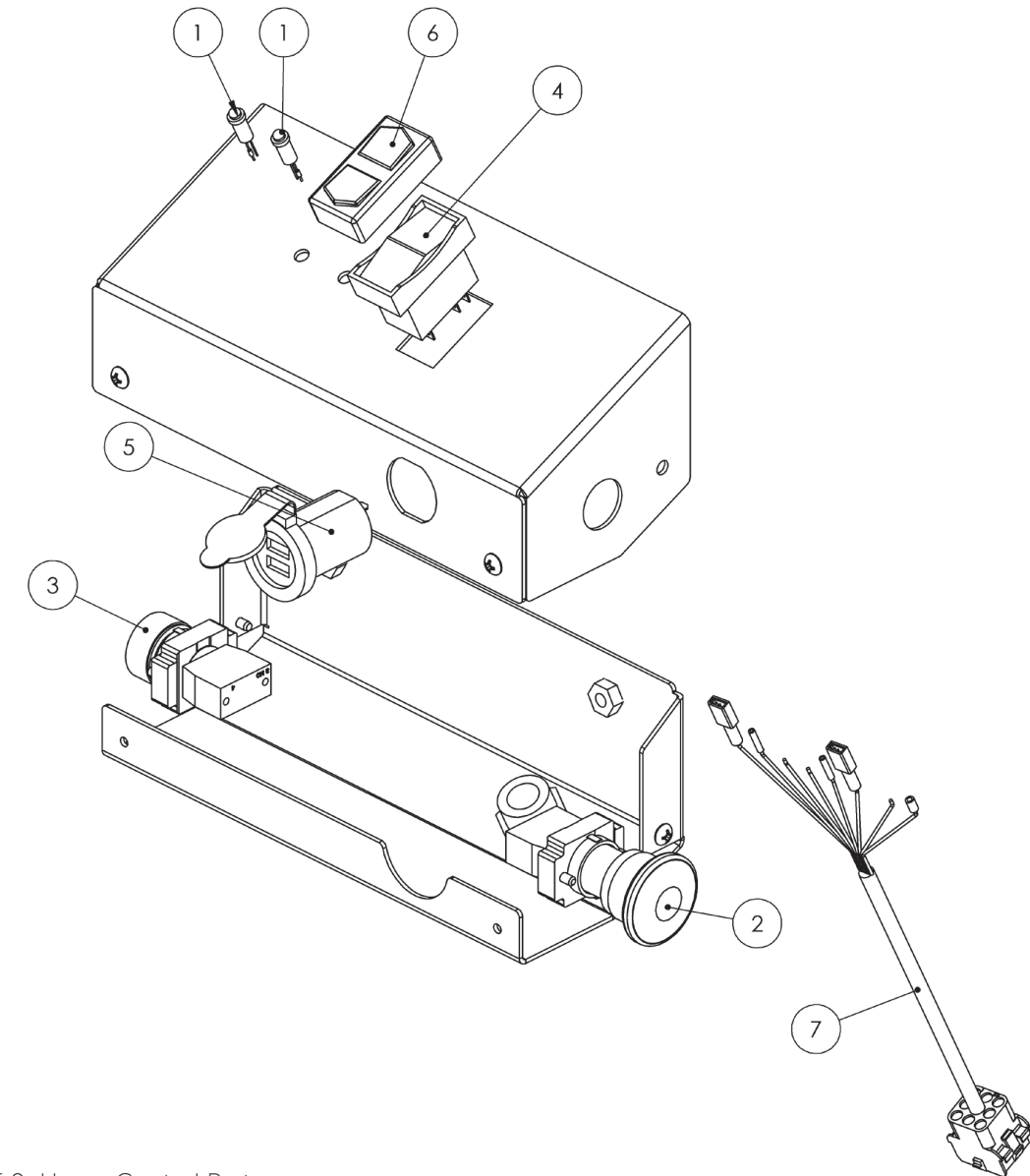
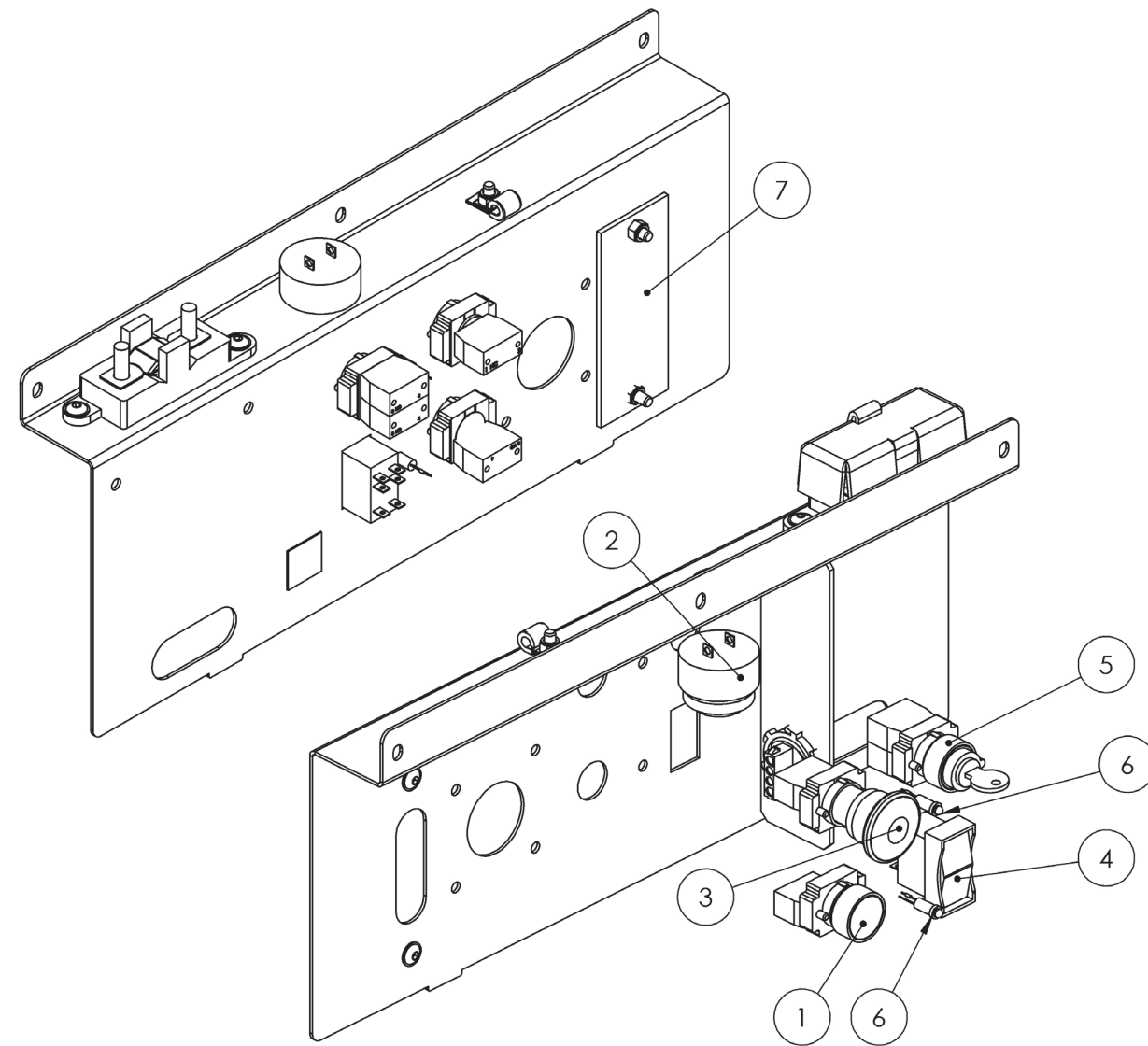


FIGURE 9: Upper Control Parts

Item #	Part Number	Part Description	Notes	QTY	Superseded By
1	ELEC-636	LED, RED		2	
2	ELEC-071-KIT	BUTTON,PUSH/PULL RED E-STOP		1	
3	ELEC-602-KIT	BUTTON,PUSH GREEN		1	
4	ELEC-133B	SWITCH,ROCKER DPDT		1	
5	ELEC-892	POWER PORT,USB 12/24V		1	
6	ELEC-133C	SWITCH,ROCKER BOOT,BLK		1	
7	177-21-021-50	ASM,CTL WIRE HARNESS UPR		1	

2.4 | GROUND CONTROL PARTS



Item #	Part Number	Part Description	Notes	QTY	Superseded By
1	ELEC-602-KIT	BUTTON,PUSH GREEN		1	
2	ELEC-635-4	ALARM, CONTINUOUS		1	
3	ELEC-071-KIT	BUTTON,PUSH/PULL RED E-STOP		1	
4	ELEC-133B	SWITCH,ROCKER DPDT		1	
5	ELEC-073D-KIT	SWITCH,KEY,3-POS MAINTAINED		1	
6	ELEC-636	LED, RED		2	
7	177-05-003-03	COVER,VIEWING WINDOW		1	

FIGURE 10: Lower Control Parts

2.5 | ENABLE SWITCH SUBPARTS

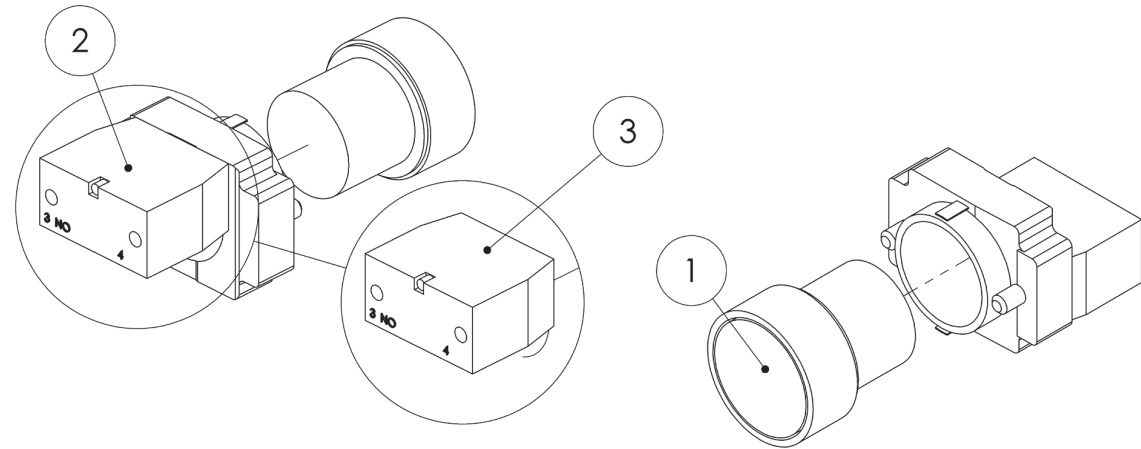


FIGURE 11: Enable Switch Subparts

Item #	Part Number	Part Description	Notes	QTY	Superseded By
1	ELEC-602	BUTTON,PUSH GREEN		1	
2	ELEC-871-KIT	CONTACT BLOCK,NO W/BASE		1	
3	ELEC-603	CONTACT BLOCK,NO		1	

2.6 | E-STOP SWITCH SUBPARTS

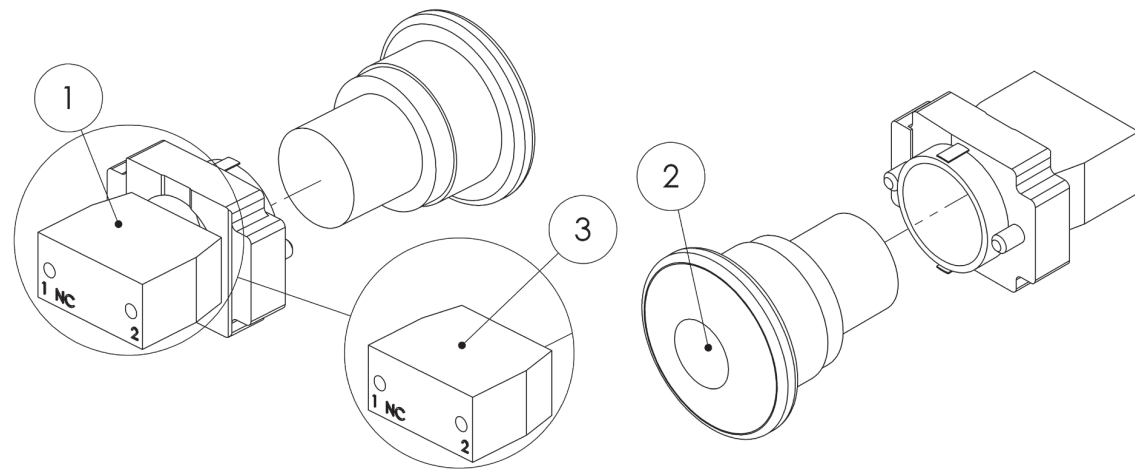


FIGURE 12: E-Stop Switch Subparts

Item #	Part Number	Part Description	Notes	QTY	Superseded By
1	ELEC-872-KIT	CONTACT BLOCK,NC W/BASE		1	
2	ELEC-071	BUTTON,PUSH/PULL RED E-STOP		1	
3	ELEC-072	CONTACT BLOCK,NC		1	

2.7 | KEY SWITCH SUBPARTS

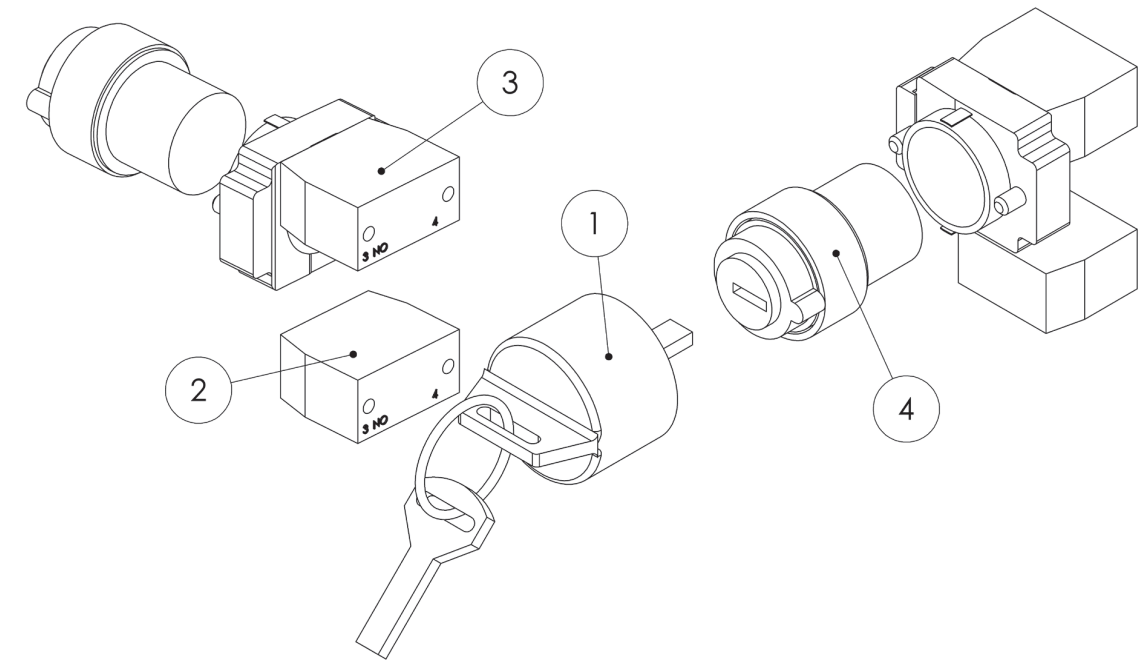
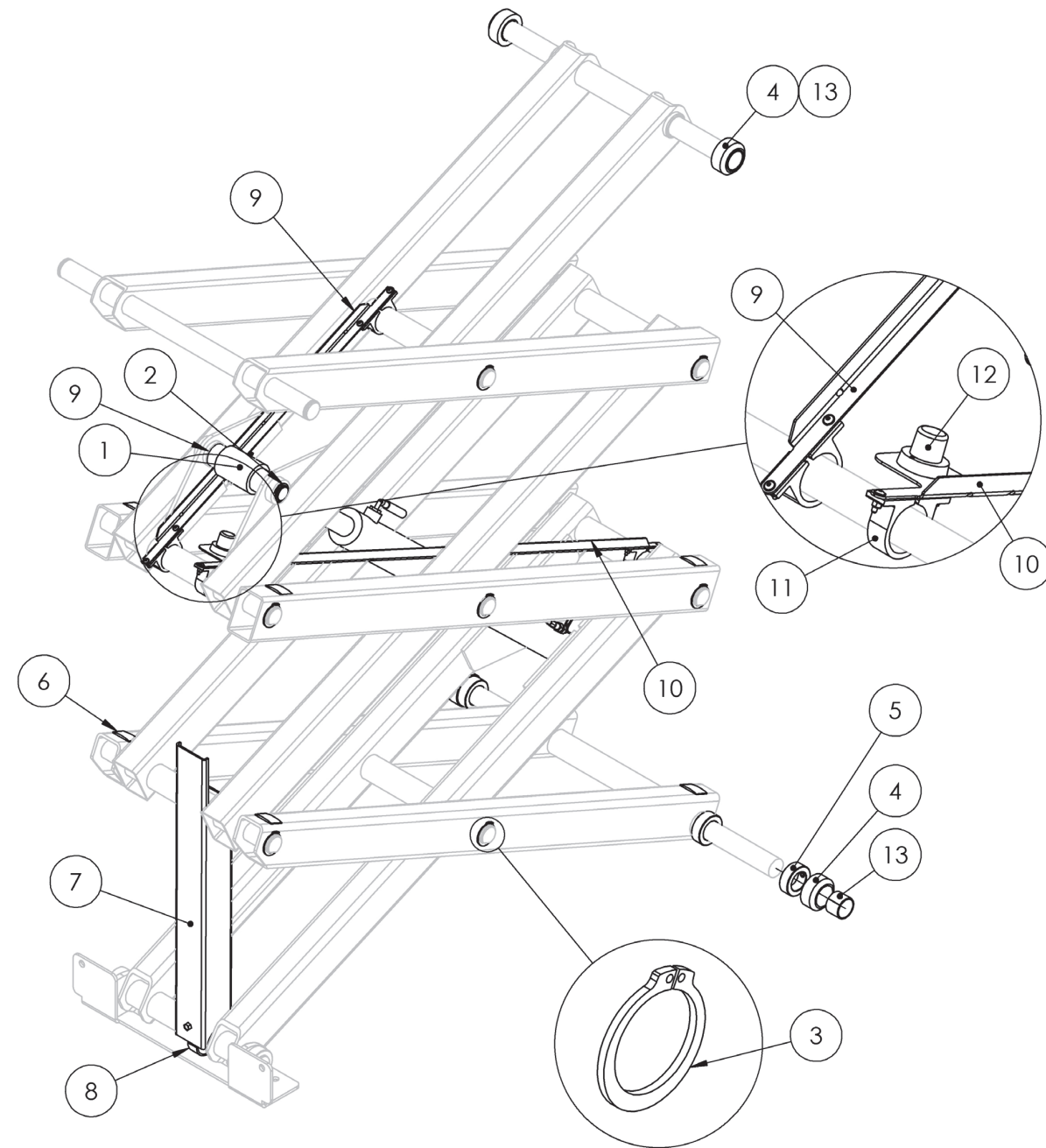


FIGURE 13: Key Switch Subparts

Item #	Part Number	Part Description	Notes	QTY	Superseded By
1	ELEC-073EKEY	KEY,SPARE		1	
2	ELEC-603	CONTACT BLOCK,NO		1	
3	ELEC-871-KIT	CONTACT BLOCK,NO W/BASE		1	

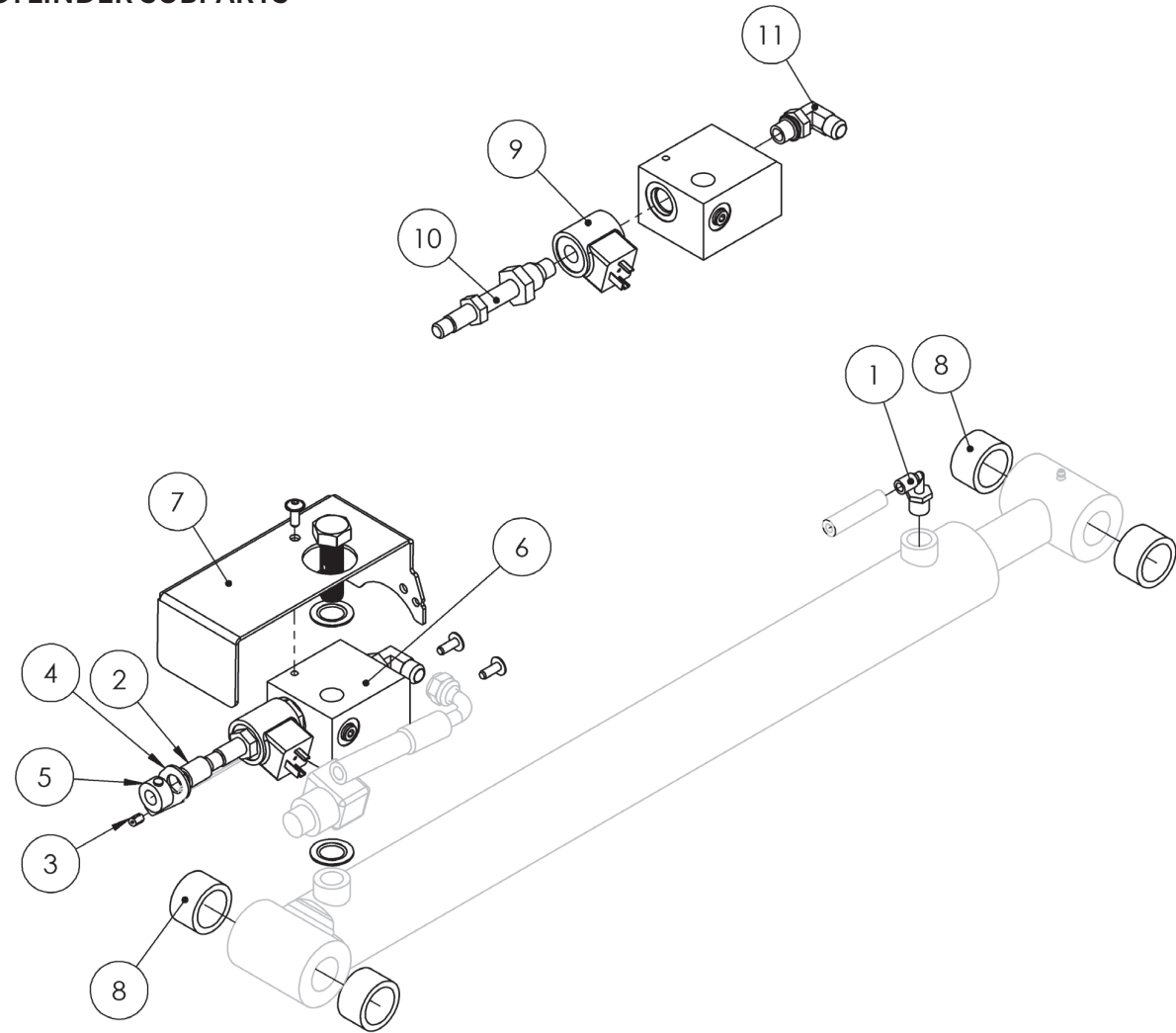
3.1 | SCISSOR PARTS



Item #	Part Number	Part Description	Notes	QTY	Superseded By
1	177-21-014-50-K	ASM,CYL IQ PRO 10		1	
2	HARD-021	RET RING 1.0		4	
3	HARD-022	1.25 RETAINING RING,EXT		16	
4	177-07-006-02	BUSHING,ROLLER,1.38ID,2.13OD		4	
5	1021000102	SET COLLAR,1.25 ID		10	
6	MISC-007-01-KIT	1 3/8 MOLDING BOND		8	
7	177-02-039-25	SCISSOR,ML TUBE		1	
8	177-02-040-04	SCISSOR,ML MNT BRKT		1	
9	177-02-041-22	SCISSOR,CONDUIT		1	
10	177-02-042-22	SCISSOR,CONDUIT L		1	
11	HARD-709	1.63 CLAMP		4	
12	177-21-018-50	ASM,CTL WIRE HARNESS BEACON		1	
13	HARD-001	DU BEARING, 1.25 ID, 1 LENGTH		4	

FIGURE 14: Scissor Parts

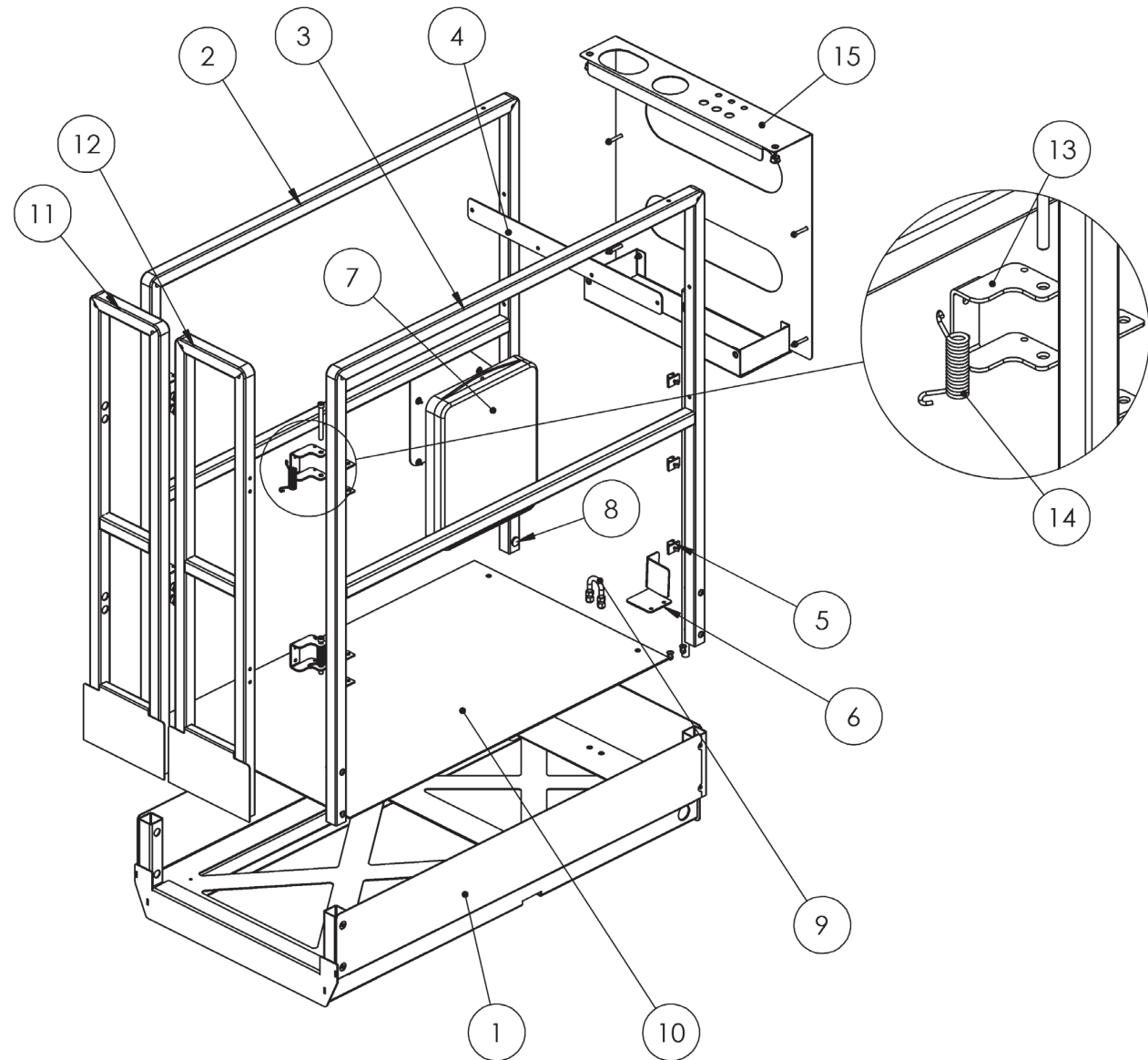
3.2 | CYLINDER SUBPARTS



THIS PAGE WAS INTENTIONALLY LEFT BLANK

FIGURE 15: Cylinder Subparts

Item #	Part Number	Part Description	Notes	QTY	Superseded By
1	HYDR-019	FITTING,ELB,NPTM 3/8-1/4 PUSH		1	
2	HARD-621	038X0.63X075 SLEEVE BEARING		1	
3	HARD-900	SLEEVE,CABLE STOP 0.09		1	
4	177-02-050-03	SCISSOR,PLATE E-DOWN ACT		1	
5	HARD-650	0.44X0.88X0.44 SHAFT COLLAR		1	
6	177-21-032-50	ASM,SCISSOR CYL VALVE BLK IQ10		1	
7	177-02-049-22	SCISSOR,MNFLD E-COVER		1	
8	177-02-051-22	SCISSOR,CYL SPACER		4	
9	HYDR-007-2E-6	COIL,12V,HC		1	
10	HYDR-007-2E-5	VALVE,NC,2W/2P,#8,DWN,PULL,DEL		1	
11	HYDR-035	FITTING,ELB,JICM9/16-SAEORM#6		1	



Item #	Part Number	Part Description	Notes	QTY	Superseded By
1	177-04-025-01	PF,WLDMNT IQ LIFT		1	
2	177-03-041-01	RAIL,WLDMNT WC-L		1	
3	177-03-040-01	RAIL,WLDMNT WC-R		1	
4	177-03-055-01	RAIL,CTL MNT BB TT		1	
5	HARD-715	0.50 CABLE CLIP		4	
6	177-04-033-01	PF,WIRE CAP		1	
7	HARD-603	MANUAL BOX		1	
8	HARD-645	PLUG,11/16 DIA, BLACK		8	
9	HARD-307	3/6-16 U-BOLT,1.0 ID		1	
10	177-04-023-03	PF,DECK,AL		1	
11	177-03-043-01	RAIL,WLDMNT GATE L		1	
12	177-03-044-01	RAIL,WLDMNT GATE R		1	
13	177-03-060-01	RAIL,GATE HINGE		4	
14	HARD-302	SPRING,TOR,2.50 X 0.63 OD		4	
15	177-21-013-55-K	ASM,TOOL TRAY BB		1	

FIGURE 16: Platform and Rails

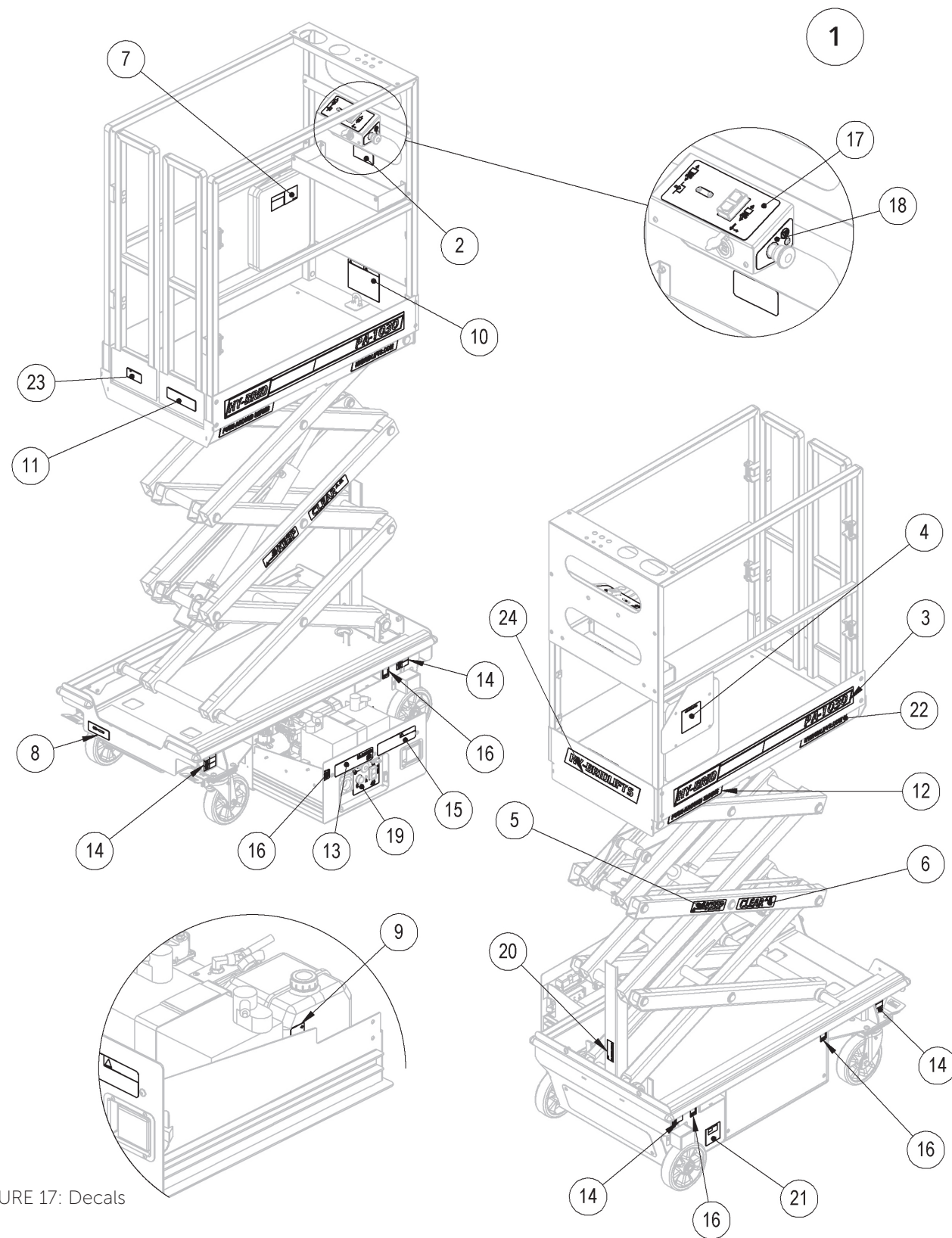
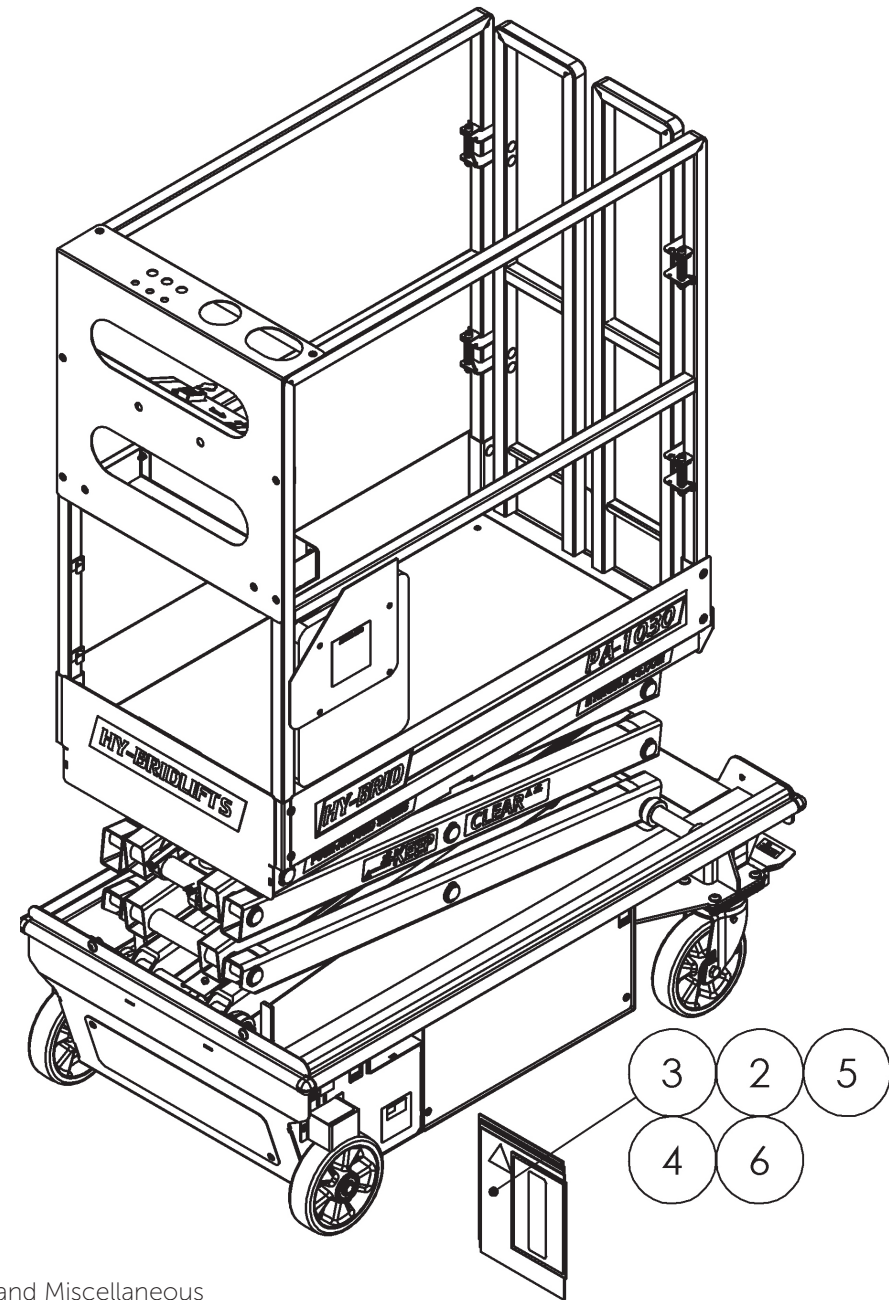


FIGURE 17: Decals

Item #	Part Number	Part Description	Notes	QTY	Superseded By
1	177-21-080-55-K	DECALS,PA-1030		1	
2	DE1204	DECAL,CAPACITY,TOOL TRAY		1	
3	DE1201	DECAL,MODEL PA-1030		2	
4	DE1205	DECAL,PA-1030 INFO		1	
5	DE1101	DECAL,KEEP		2	
6	DE1102	DECAL,CLEAR		2	
7	DE1203	DECAL,MANUAL BOX		1	
8	DE1006	DECAL,E-DOWN CABLE		1	
9	DE1008	DECAL,HYDR FLUID		1	
10	DE1206	DECAL,TOE BOARD,IQ		1	
11	DE1202	DECAL,CAPACITY,530#,1P,I,WO/SO		1	
12	DE1231	DECAL,SERIES PA		2	
13	DE1001	DECAL,LWR DANGERS		1	
14	DE1005	DECAL,WHEEL LOAD PA-1030		4	
15	DE1004	DECAL,LWR WARNINGS		1	
16	DE1003	DECAL,FORK		4	
17	DE1228	DECAL,CTL UPR		1	
18	DE1229	DECAL,CTL UPR E-STOP		1	
19	DE1026	DECAL,CTL LWR PA-1030		1	
20	DE1007	DECAL,MAINT LOCK		1	
21	DE1221	DECAL,MADE IN USA		2	
22	DE1232	DECAL,WEBSITE		2	
23	DE1230	DECAL,PROP 65		1	
24	DE1207	DECAL,HY-BRID LIFTS		1	

SECTION 6 | OPTIONS AND MISCELLANEOUS



THIS PAGE WAS INTENTIONALLY LEFT BLANK

FIGURE 18: Options and Miscellaneous

Item #	Part Number	Part Description	Notes	QTY	Superseded By
1	HS-177-20-001-55	HYD SCH,PA-1030	HYDRAULIC SCHEMATIC	1	
2	MISC-600	MANUAL,AERIAL PF		1	
3	MISC-601-1	MANUAL OF RESPONSIBILITY A92.3		1	
4	SUPO-743	MANUAL,OP PA-1030		1	
5	SUPO-744	MANUAL,PA-1030		1	
6	SUPO-745	MANUAL,PARTS PA-1030		1	

HY-BRID LIFTS™

BY CUSTOM EQUIPMENT LLC

Push-Around Mobile Elevated Work Platform
Parts Manual
PA-1030

© 2019 Custom Equipment, LLC
2647 Highway 175
Richfield, WI 53076
U.S.A.
Tel. +1-262-644-1300
Fax: +1-262-644-1320
www.hybridlifts.com
service@customequipmentlifts.com

“Hy-Brid Lifts” is a trademark of Custom Equipment, LLC
These machines comply with ANSI/SIA A92.3

Revision Date: April 2019

Printed in the U.S.A.